

# Broiler



## Cobb500™

Broiler  
Performance  
& Nutrition  
Supplement

COBB-VANTRESS.COM



ONE FAMILY.  
ONE PURPOSE.

# Broiler Performance & Nutrition



**This supplement presents broiler performance and yield targets for your Cobb500 broilers, together with recommendations on nutritional specifications designed to help achieve these targets.**

---

Broiler performance varies from country to country. The growth rates shown are the targets for achieving cost-efficient performance.

The performance objectives in this supplement are displayed in both metric and imperial configurations.

Please contact your local Cobb technical representative to help develop a program designed specifically to suit your own local conditions based on the advice and information contained in this supplement and the main Cobb Broiler Management Guide.

Today's broiler farmers not only want to raise broilers that grow efficiently, but also want broilers that have good livability and good animal welfare characteristics. Cobb's dedication for broiler genetics has generated incredible advances in economic traits related to feed efficiency, growth and muscle quality, and has also produced broiler genetics with improved cardiovascular function, better skeletal strength, and more uniform body size.

---

# Performance Objectives - Metric

## AS HATCHED

| Age days  | Weight for Age (g) | Daily Gain (g) | Average Daily Gain (g) | Cumulative Feed Conversion | Daily Feed Consumption (g) | Cumulative Feed Consumption (g) |
|-----------|--------------------|----------------|------------------------|----------------------------|----------------------------|---------------------------------|
| 0         | 42                 |                |                        |                            |                            |                                 |
| 1         | 63                 |                |                        |                            |                            |                                 |
| 2         | 74                 |                |                        |                            |                            |                                 |
| 3         | 90                 |                |                        |                            |                            |                                 |
| 4         | 109                |                |                        |                            |                            |                                 |
| 5         | 134                |                |                        |                            |                            |                                 |
| 6         | 163                |                |                        |                            |                            |                                 |
| <b>7</b>  | <b>193</b>         | <b>30</b>      | <b>28</b>              | <b>0.76</b>                |                            | <b>145</b>                      |
| 8         | 228                | 36             | 29                     | 0.80                       | 37                         | 182                             |
| 9         | 269                | 41             | 30                     | 0.84                       | 43                         | 225                             |
| 10        | 313                | 44             | 31                     | 0.88                       | 50                         | 275                             |
| 11        | 362                | 48             | 33                     | 0.92                       | 57                         | 331                             |
| 12        | 414                | 52             | 34                     | 0.95                       | 64                         | 395                             |
| 13        | 469                | 55             | 36                     | 1.00                       | 72                         | 467                             |
| <b>14</b> | <b>528</b>         | <b>59</b>      | <b>38</b>              | <b>1.03</b>                | <b>74</b>                  | <b>541</b>                      |
| 15        | 589                | 62             | 39                     | 1.05                       | 78                         | 619                             |
| 16        | 654                | 65             | 41                     | 1.08                       | 85                         | 704                             |
| 17        | 722                | 68             | 42                     | 1.10                       | 91                         | 795                             |
| 18        | 792                | 70             | 44                     | 1.13                       | 103                        | 898                             |
| 19        | 865                | 73             | 46                     | 1.16                       | 110                        | 1007                            |
| 20        | 941                | 75             | 47                     | 1.19                       | 114                        | 1121                            |
| <b>21</b> | <b>1018</b>        | <b>78</b>      | <b>48</b>              | <b>1.22</b>                | <b>118</b>                 | <b>1239</b>                     |
| 22        | 1098               | 80             | 50                     | 1.24                       | 123                        | 1362                            |
| 23        | 1180               | 82             | 51                     | 1.26                       | 128                        | 1489                            |
| 24        | 1264               | 84             | 53                     | 1.28                       | 133                        | 1622                            |
| 25        | 1349               | 85             | 54                     | 1.30                       | 137                        | 1759                            |
| 26        | 1436               | 87             | 55                     | 1.33                       | 144                        | 1903                            |
| 27        | 1525               | 89             | 56                     | 1.35                       | 150                        | 2054                            |
| <b>28</b> | <b>1615</b>        | <b>90</b>      | <b>58</b>              | <b>1.37</b>                | <b>156</b>                 | <b>2209</b>                     |
| 29        | 1706               | 91             | 59                     | 1.39                       | 160                        | 2369                            |
| 30        | 1798               | 92             | 60                     | 1.41                       | 164                        | 2533                            |
| 31        | 1892               | 93             | 61                     | 1.43                       | 167                        | 2700                            |
| 32        | 1986               | 94             | 62                     | 1.45                       | 170                        | 2870                            |
| 33        | 2081               | 95             | 63                     | 1.46                       | 174                        | 3043                            |
| 34        | 2177               | 96             | 64                     | 1.48                       | 177                        | 3220                            |
| <b>35</b> | <b>2273</b>        | <b>96</b>      | <b>65</b>              | <b>1.50</b>                | <b>179</b>                 | <b>3399</b>                     |
| 36        | 2369               | 97             | 66                     | 1.51                       | 182                        | 3581                            |
| 37        | 2466               | 97             | 67                     | 1.53                       | 186                        | 3767                            |
| 38        | 2563               | 97             | 67                     | 1.54                       | 190                        | 3958                            |
| 39        | 2661               | 97             | 68                     | 1.56                       | 193                        | 4151                            |
| 40        | 2758               | 97             | 69                     | 1.58                       | 197                        | 4348                            |
| 41        | 2855               | 97             | 70                     | 1.59                       | 203                        | 4552                            |
| <b>42</b> | <b>2952</b>        | <b>97</b>      | <b>70</b>              | <b>1.61</b>                | <b>208</b>                 | <b>4760</b>                     |
| 43        | 3049               | 97             | 71                     | 1.63                       | 213                        | 4973                            |
| 44        | 3145               | 96             | 71                     | 1.65                       | 218                        | 5191                            |
| 45        | 3240               | 95             | 72                     | 1.67                       | 224                        | 5414                            |
| 46        | 3335               | 95             | 73                     | 1.69                       | 228                        | 5642                            |
| 47        | 3430               | 95             | 73                     | 1.71                       | 231                        | 5873                            |
| 48        | 3524               | 94             | 73                     | 1.73                       | 236                        | 6109                            |
| <b>49</b> | <b>3617</b>        | <b>93</b>      | <b>74</b>              | <b>1.76</b>                | <b>241</b>                 | <b>6349</b>                     |
| 50        | 3707               | 91             | 74                     | 1.78                       | 243                        | 6592                            |
| 51        | 3797               | 90             | 74                     | 1.80                       | 244                        | 6835                            |
| 52        | 3885               | 88             | 75                     | 1.82                       | 245                        | 7080                            |
| 53        | 3973               | 87             | 75                     | 1.84                       | 247                        | 7326                            |
| 54        | 4059               | 86             | 75                     | 1.87                       | 247                        | 7573                            |
| 55        | 4144               | 85             | 75                     | 1.89                       | 246                        | 7819                            |
| <b>56</b> | <b>4227</b>        | <b>83</b>      | <b>75</b>              | <b>1.91</b>                | <b>245</b>                 | <b>8063</b>                     |
| 57        | 4309               | 82             | 76                     | 1.93                       | 243                        | 8306                            |
| 58        | 4389               | 80             | 76                     | 1.95                       | 241                        | 8547                            |
| 59        | 4466               | 77             | 76                     | 1.97                       | 239                        | 8786                            |
| 60        | 4542               | 76             | 76                     | 1.99                       | 237                        | 9022                            |
| 61        | 4616               | 74             | 76                     | 2.01                       | 234                        | 9256                            |
| 62        | 4688               | 73             | 76                     | 2.02                       | 232                        | 9488                            |
| <b>63</b> | <b>4759</b>        | <b>70</b>      | <b>76</b>              | <b>2.04</b>                | <b>228</b>                 | <b>9716</b>                     |

# Performance Objectives - Metric

## FEMALES

| Age days  | Weight for Age (g) | Daily Gain (g) | Average Daily Gain (g) | Cumulative Feed Conversion | Daily Feed Consumption (g) | Cumulative Feed Consumption (g) |
|-----------|--------------------|----------------|------------------------|----------------------------|----------------------------|---------------------------------|
| 0         | 42                 |                |                        |                            |                            |                                 |
| 1         | 63                 |                |                        |                            |                            |                                 |
| 2         | 74                 |                |                        |                            |                            |                                 |
| 3         | 89                 |                |                        |                            |                            |                                 |
| 4         | 108                |                |                        |                            |                            |                                 |
| 5         | 133                |                |                        |                            |                            |                                 |
| 6         | 162                |                |                        |                            |                            |                                 |
| <b>7</b>  | <b>191</b>         | <b>29</b>      | <b>27</b>              | <b>0.76</b>                |                            | <b>145</b>                      |
| 8         | 227                | 36             | 28                     | 0.80                       | 36                         | 181                             |
| 9         | 267                | 40             | 30                     | 0.84                       | 43                         | 224                             |
| 10        | 310                | 43             | 31                     | 0.88                       | 50                         | 274                             |
| 11        | 358                | 48             | 33                     | 0.92                       | 56                         | 330                             |
| 12        | 409                | 51             | 34                     | 0.96                       | 63                         | 393                             |
| 13        | 464                | 54             | 36                     | 1.00                       | 70                         | 463                             |
| <b>14</b> | <b>521</b>         | <b>58</b>      | <b>37</b>              | <b>1.03</b>                | <b>72</b>                  | <b>535</b>                      |
| 15        | 582                | 60             | 39                     | 1.05                       | 76                         | 611                             |
| 16        | 645                | 63             | 40                     | 1.08                       | 83                         | 694                             |
| 17        | 711                | 66             | 42                     | 1.10                       | 89                         | 783                             |
| 18        | 779                | 68             | 43                     | 1.13                       | 98                         | 881                             |
| 19        | 849                | 70             | 45                     | 1.16                       | 107                        | 988                             |
| 20        | 921                | 72             | 46                     | 1.19                       | 112                        | 1100                            |
| <b>21</b> | <b>995</b>         | <b>74</b>      | <b>47</b>              | <b>1.22</b>                | <b>115</b>                 | <b>1215</b>                     |
| 22        | 1071               | 76             | 49                     | 1.25                       | 120                        | 1335                            |
| 23        | 1148               | 77             | 50                     | 1.27                       | 124                        | 1459                            |
| 24        | 1227               | 79             | 51                     | 1.29                       | 128                        | 1587                            |
| 25        | 1307               | 80             | 52                     | 1.31                       | 131                        | 1718                            |
| 26        | 1389               | 81             | 53                     | 1.34                       | 137                        | 1855                            |
| 27        | 1471               | 82             | 54                     | 1.36                       | 143                        | 1998                            |
| <b>28</b> | <b>1554</b>        | <b>83</b>      | <b>56</b>              | <b>1.38</b>                | <b>148</b>                 | <b>2146</b>                     |
| 29        | 1638               | 84             | 56                     | 1.40                       | 151                        | 2297                            |
| 30        | 1723               | 85             | 57                     | 1.42                       | 154                        | 2451                            |
| 31        | 1808               | 85             | 58                     | 1.44                       | 156                        | 2607                            |
| 32        | 1894               | 86             | 59                     | 1.46                       | 159                        | 2766                            |
| 33        | 1980               | 86             | 60                     | 1.48                       | 162                        | 2928                            |
| 34        | 2067               | 86             | 61                     | 1.50                       | 164                        | 3092                            |
| <b>35</b> | <b>2153</b>        | <b>87</b>      | <b>62</b>              | <b>1.51</b>                | <b>166</b>                 | <b>3258</b>                     |
| 36        | 2240               | 87             | 62                     | 1.53                       | 169                        | 3427                            |
| 37        | 2327               | 87             | 63                     | 1.55                       | 172                        | 3599                            |
| 38        | 2413               | 87             | 64                     | 1.56                       | 177                        | 3776                            |
| 39        | 2500               | 86             | 64                     | 1.58                       | 179                        | 3955                            |
| 40        | 2586               | 86             | 65                     | 1.60                       | 183                        | 4138                            |
| 41        | 2672               | 86             | 65                     | 1.62                       | 189                        | 4327                            |
| <b>42</b> | <b>2757</b>        | <b>85</b>      | <b>66</b>              | <b>1.64</b>                | <b>193</b>                 | <b>4520</b>                     |
| 43        | 2843               | 85             | 66                     | 1.66                       | 198                        | 4718                            |
| 44        | 2927               | 84             | 67                     | 1.68                       | 202                        | 4920                            |
| 45        | 3011               | 84             | 67                     | 1.70                       | 208                        | 5128                            |
| 46        | 3094               | 83             | 67                     | 1.73                       | 212                        | 5340                            |
| 47        | 3177               | 83             | 68                     | 1.75                       | 215                        | 5555                            |
| 48        | 3260               | 83             | 68                     | 1.77                       | 220                        | 5775                            |
| <b>49</b> | <b>3342</b>        | <b>82</b>      | <b>68</b>              | <b>1.80</b>                | <b>225</b>                 | <b>6000</b>                     |
| 50        | 3421               | 79             | 68                     | 1.82                       | 226                        | 6226                            |
| 51        | 3498               | 78             | 69                     | 1.84                       | 225                        | 6451                            |
| 52        | 3576               | 77             | 69                     | 1.87                       | 224                        | 6675                            |
| 53        | 3652               | 77             | 69                     | 1.89                       | 224                        | 6899                            |
| 54        | 3728               | 76             | 69                     | 1.91                       | 223                        | 7122                            |
| 55        | 3804               | 75             | 69                     | 1.93                       | 221                        | 7343                            |
| <b>56</b> | <b>3878</b>        | <b>75</b>      | <b>69</b>              | <b>1.95</b>                | <b>219</b>                 | <b>7562</b>                     |
| 57        | 3952               | 73             | 69                     | 1.97                       | 217                        | 7779                            |
| 58        | 4024               | 73             | 69                     | 1.99                       | 216                        | 7995                            |
| 59        | 4094               | 70             | 69                     | 2.01                       | 214                        | 8209                            |
| 60        | 4164               | 70             | 69                     | 2.02                       | 213                        | 8422                            |
| 61        | 4233               | 69             | 69                     | 2.04                       | 211                        | 8633                            |
| 62        | 4302               | 69             | 69                     | 2.06                       | 209                        | 8842                            |
| <b>63</b> | <b>4370</b>        | <b>68</b>      | <b>69</b>              | <b>2.07</b>                | <b>207</b>                 | <b>9049</b>                     |

# Performance Objectives - Metric

## MALES

| Age days  | Weight for Age (g) | Daily Gain (g) | Average Daily Gain (g) | Cumulative Feed Conversion | Daily Feed Consumption (g) | Cumulative Feed Consumption (g) |
|-----------|--------------------|----------------|------------------------|----------------------------|----------------------------|---------------------------------|
| 0         | 42                 |                |                        |                            |                            |                                 |
| 1         | 63                 |                |                        |                            |                            |                                 |
| 2         | 74                 |                |                        |                            |                            |                                 |
| 3         | 90                 |                |                        |                            |                            |                                 |
| 4         | 110                |                |                        |                            |                            |                                 |
| 5         | 135                |                |                        |                            |                            |                                 |
| 6         | 164                |                |                        |                            |                            |                                 |
| <b>7</b>  | <b>194</b>         | <b>30</b>      | <b>28</b>              | <b>0.75</b>                |                            | <b>146</b>                      |
| 8         | 230                | 36             | 29                     | 0.79                       | 37                         | 183                             |
| 9         | 271                | 41             | 30                     | 0.83                       | 43                         | 226                             |
| 10        | 316                | 45             | 32                     | 0.87                       | 50                         | 276                             |
| 11        | 365                | 49             | 33                     | 0.91                       | 57                         | 333                             |
| 12        | 418                | 53             | 35                     | 0.95                       | 64                         | 397                             |
| 13        | 474                | 56             | 36                     | 0.99                       | 74                         | 471                             |
| <b>14</b> | <b>534</b>         | <b>60</b>      | <b>38</b>              | <b>1.02</b>                | <b>76</b>                  | <b>547</b>                      |
| 15        | 597                | 63             | 40                     | 1.05                       | 80                         | 627                             |
| 16        | 664                | 67             | 41                     | 1.08                       | 87                         | 714                             |
| 17        | 733                | 70             | 43                     | 1.10                       | 93                         | 807                             |
| 18        | 806                | 73             | 45                     | 1.13                       | 107                        | 914                             |
| 19        | 882                | 76             | 46                     | 1.16                       | 112                        | 1027                            |
| 20        | 960                | 79             | 48                     | 1.19                       | 116                        | 1143                            |
| <b>21</b> | <b>1042</b>        | <b>81</b>      | <b>50</b>              | <b>1.21</b>                | <b>120</b>                 | <b>1263</b>                     |
| 22        | 1125               | 84             | 51                     | 1.23                       | 125                        | 1388                            |
| 23        | 1212               | 86             | 53                     | 1.25                       | 131                        | 1519                            |
| 24        | 1300               | 89             | 54                     | 1.27                       | 138                        | 1657                            |
| 25        | 1391               | 91             | 56                     | 1.29                       | 143                        | 1800                            |
| 26        | 1484               | 93             | 57                     | 1.32                       | 151                        | 1951                            |
| 27        | 1579               | 95             | 58                     | 1.34                       | 158                        | 2109                            |
| <b>28</b> | <b>1675</b>        | <b>97</b>      | <b>60</b>              | <b>1.36</b>                | <b>164</b>                 | <b>2273</b>                     |
| 29        | 1774               | 98             | 61                     | 1.38                       | 169                        | 2441                            |
| 30        | 1874               | 100            | 62                     | 1.40                       | 173                        | 2615                            |
| 31        | 1975               | 101            | 64                     | 1.41                       | 177                        | 2792                            |
| 32        | 2078               | 103            | 65                     | 1.43                       | 181                        | 2973                            |
| 33        | 2182               | 104            | 66                     | 1.45                       | 185                        | 3159                            |
| 34        | 2286               | 105            | 67                     | 1.46                       | 189                        | 3348                            |
| <b>35</b> | <b>2392</b>        | <b>106</b>     | <b>68</b>              | <b>1.48</b>                | <b>192</b>                 | <b>3540</b>                     |
| 36        | 2499               | 107            | 69                     | 1.49                       | 195                        | 3735                            |
| 37        | 2606               | 107            | 70                     | 1.51                       | 200                        | 3935                            |
| 38        | 2714               | 108            | 71                     | 1.53                       | 204                        | 4139                            |
| 39        | 2822               | 108            | 72                     | 1.54                       | 208                        | 4347                            |
| 40        | 2930               | 108            | 73                     | 1.56                       | 212                        | 4559                            |
| 41        | 3038               | 108            | 74                     | 1.57                       | 218                        | 4776                            |
| <b>42</b> | <b>3147</b>        | <b>108</b>     | <b>75</b>              | <b>1.59</b>                | <b>223</b>                 | <b>4999</b>                     |
| 43        | 3255               | 108            | 76                     | 1.61                       | 229                        | 5228                            |
| 44        | 3363               | 108            | 76                     | 1.62                       | 234                        | 5461                            |
| 45        | 3470               | 107            | 77                     | 1.64                       | 239                        | 5701                            |
| 46        | 3577               | 107            | 78                     | 1.66                       | 243                        | 5944                            |
| 47        | 3682               | 106            | 78                     | 1.68                       | 247                        | 6191                            |
| 48        | 3787               | 105            | 79                     | 1.70                       | 251                        | 6443                            |
| <b>49</b> | <b>3891</b>        | <b>104</b>     | <b>79</b>              | <b>1.72</b>                | <b>256</b>                 | <b>6699</b>                     |
| 50        | 3994               | 103            | 80                     | 1.74                       | 259                        | 6958                            |
| 51        | 4095               | 101            | 80                     | 1.76                       | 262                        | 7220                            |
| 52        | 4195               | 100            | 81                     | 1.78                       | 265                        | 7485                            |
| 53        | 4293               | 98             | 81                     | 1.81                       | 269                        | 7754                            |
| 54        | 4389               | 96             | 81                     | 1.83                       | 270                        | 8024                            |
| 55        | 4484               | 94             | 82                     | 1.85                       | 271                        | 8295                            |
| <b>56</b> | <b>4576</b>        | <b>92</b>      | <b>82</b>              | <b>1.87</b>                | <b>270</b>                 | <b>8565</b>                     |
| 57        | 4666               | 90             | 82                     | 1.89                       | 268                        | 8833                            |
| 58        | 4753               | 87             | 82                     | 1.91                       | 266                        | 9099                            |
| 59        | 4838               | 85             | 82                     | 1.94                       | 264                        | 9363                            |
| 60        | 4920               | 82             | 82                     | 1.96                       | 260                        | 9623                            |
| 61        | 4999               | 79             | 82                     | 1.98                       | 257                        | 9880                            |
| 62        | 5075               | 76             | 82                     | 2.00                       | 254                        | 10134                           |
| <b>63</b> | <b>5148</b>        | <b>73</b>      | <b>82</b>              | <b>2.02</b>                | <b>249</b>                 | <b>10383</b>                    |



# Performance Objectives - Imperial

## AS HATCHED

| Age days  | Weight for Age (lb) | Daily Gain (lb) | Average Daily Gain (lb) | Cumulative Feed Conversion | Daily Feed Consumption (lb) | Cumulative Feed Consumption (lb) |
|-----------|---------------------|-----------------|-------------------------|----------------------------|-----------------------------|----------------------------------|
| 0         | 0.093               |                 |                         |                            |                             |                                  |
| 1         | 0.139               |                 |                         |                            |                             |                                  |
| 2         | 0.163               |                 |                         |                            |                             |                                  |
| 3         | 0.197               |                 |                         |                            |                             |                                  |
| 4         | 0.240               |                 |                         |                            |                             |                                  |
| 5         | 0.295               |                 |                         |                            |                             |                                  |
| 6         | 0.359               |                 |                         |                            |                             |                                  |
| <b>7</b>  | <b>0.425</b>        | <b>0.065</b>    | <b>0.061</b>            | <b>0.76</b>                |                             | <b>0.321</b>                     |
| 8         | 0.504               | 0.079           | 0.063                   | 0.80                       | 0.095                       | 0.401                            |
| 9         | 0.593               | 0.090           | 0.066                   | 0.84                       | 0.110                       | 0.496                            |
| 10        | 0.691               | 0.097           | 0.069                   | 0.88                       | 0.125                       | 0.606                            |
| 11        | 0.797               | 0.107           | 0.072                   | 0.92                       | 0.140                       | 0.731                            |
| 12        | 0.912               | 0.114           | 0.076                   | 0.95                       | 0.159                       | 0.871                            |
| 13        | 1.034               | 0.122           | 0.080                   | 1.00                       | 0.163                       | 1.029                            |
| <b>14</b> | <b>1.163</b>        | <b>0.129</b>    | <b>0.083</b>            | <b>1.03</b>                | <b>0.172</b>                | <b>1.193</b>                     |
| 15        | 1.299               | 0.136           | 0.087                   | 1.05                       | 0.187                       | 1.364                            |
| 16        | 1.442               | 0.143           | 0.090                   | 1.08                       | 0.201                       | 1.552                            |
| 17        | 1.592               | 0.149           | 0.094                   | 1.10                       | 0.226                       | 1.753                            |
| 18        | 1.747               | 0.155           | 0.097                   | 1.13                       | 0.242                       | 1.979                            |
| 19        | 1.908               | 0.161           | 0.100                   | 1.16                       | 0.251                       | 2.221                            |
| 20        | 2.074               | 0.166           | 0.104                   | 1.19                       | 0.259                       | 2.472                            |
| <b>21</b> | <b>2.245</b>        | <b>0.171</b>    | <b>0.107</b>            | <b>1.22</b>                | <b>0.270</b>                | <b>2.731</b>                     |
| 22        | 2.421               | 0.176           | 0.110                   | 1.24                       | 0.281                       | 3.002                            |
| 23        | 2.602               | 0.180           | 0.113                   | 1.26                       | 0.293                       | 3.283                            |
| 24        | 2.786               | 0.185           | 0.116                   | 1.28                       | 0.302                       | 3.576                            |
| 25        | 2.975               | 0.188           | 0.119                   | 1.30                       | 0.318                       | 3.878                            |
| 26        | 3.167               | 0.192           | 0.122                   | 1.33                       | 0.331                       | 4.196                            |
| 27        | 3.362               | 0.195           | 0.125                   | 1.35                       | 0.343                       | 4.527                            |
| <b>28</b> | <b>3.560</b>        | <b>0.198</b>    | <b>0.127</b>            | <b>1.37</b>                | <b>0.352</b>                | <b>4.871</b>                     |
| 29        | 3.761               | 0.201           | 0.130                   | 1.39                       | 0.361                       | 5.223                            |
| 30        | 3.965               | 0.204           | 0.132                   | 1.41                       | 0.367                       | 5.584                            |
| 31        | 4.171               | 0.206           | 0.135                   | 1.43                       | 0.375                       | 5.952                            |
| 32        | 4.378               | 0.208           | 0.137                   | 1.45                       | 0.383                       | 6.327                            |
| 33        | 4.588               | 0.209           | 0.139                   | 1.46                       | 0.389                       | 6.709                            |
| 34        | 4.798               | 0.211           | 0.141                   | 1.48                       | 0.395                       | 7.099                            |
| <b>35</b> | <b>5.011</b>        | <b>0.212</b>    | <b>0.143</b>            | <b>1.50</b>                | <b>0.401</b>                | <b>7.493</b>                     |
| 36        | 5.224               | 0.213           | 0.145                   | 1.51                       | 0.410                       | 7.895                            |
| 37        | 5.437               | 0.214           | 0.147                   | 1.53                       | 0.420                       | 8.305                            |
| 38        | 5.651               | 0.214           | 0.149                   | 1.54                       | 0.426                       | 8.725                            |
| 39        | 5.866               | 0.214           | 0.150                   | 1.56                       | 0.435                       | 9.151                            |
| 40        | 6.080               | 0.214           | 0.152                   | 1.58                       | 0.448                       | 9.587                            |
| 41        | 6.295               | 0.214           | 0.154                   | 1.59                       | 0.458                       | 10.035                           |
| <b>42</b> | <b>6.508</b>        | <b>0.213</b>    | <b>0.155</b>            | <b>1.61</b>                | <b>0.470</b>                | <b>10.493</b>                    |
| 43        | 6.721               | 0.213           | 0.156                   | 1.63                       | 0.480                       | 10.963                           |
| 44        | 6.933               | 0.212           | 0.158                   | 1.65                       | 0.493                       | 11.443                           |
| 45        | 7.143               | 0.210           | 0.159                   | 1.67                       | 0.502                       | 11.937                           |
| 46        | 7.353               | 0.210           | 0.160                   | 1.69                       | 0.510                       | 12.439                           |
| 47        | 7.562               | 0.209           | 0.161                   | 1.71                       | 0.519                       | 12.948                           |
| 48        | 7.769               | 0.207           | 0.162                   | 1.73                       | 0.530                       | 13.468                           |
| <b>49</b> | <b>7.973</b>        | <b>0.205</b>    | <b>0.163</b>            | <b>1.76</b>                | <b>0.535</b>                | <b>13.998</b>                    |
| 50        | 8.173               | 0.200           | 0.163                   | 1.78                       | 0.537                       | 14.533                           |
| 51        | 8.370               | 0.197           | 0.164                   | 1.80                       | 0.539                       | 15.070                           |
| 52        | 8.565               | 0.195           | 0.165                   | 1.82                       | 0.543                       | 15.609                           |
| 53        | 8.758               | 0.193           | 0.165                   | 1.84                       | 0.543                       | 16.152                           |
| 54        | 8.948               | 0.190           | 0.166                   | 1.87                       | 0.542                       | 16.696                           |
| 55        | 9.135               | 0.187           | 0.166                   | 1.89                       | 0.539                       | 17.238                           |
| <b>56</b> | <b>9.319</b>        | <b>0.184</b>    | <b>0.166</b>            | <b>1.91</b>                | <b>0.535</b>                | <b>17.777</b>                    |
| 57        | 9.499               | 0.180           | 0.167                   | 1.93                       | 0.531                       | 18.312                           |
| 58        | 9.675               | 0.176           | 0.167                   | 1.95                       | 0.527                       | 18.843                           |
| 59        | 9.846               | 0.171           | 0.167                   | 1.97                       | 0.521                       | 19.370                           |
| 60        | 10.013              | 0.167           | 0.167                   | 1.99                       | 0.516                       | 19.891                           |
| 61        | 10.176              | 0.163           | 0.167                   | 2.01                       | 0.510                       | 20.407                           |
| 62        | 10.336              | 0.160           | 0.167                   | 2.02                       | 0.503                       | 20.917                           |
| <b>63</b> | <b>10.491</b>       | <b>0.155</b>    | <b>0.167</b>            | <b>2.04</b>                | <b>0.495</b>                | <b>21.420</b>                    |

# Performance Objectives - Imperial

## FEMALES

| Age days  | Weight for Age (lb) | Daily Gain (lb) | Average Daily Gain (lb) | Cumulative Feed Conversion | Daily Feed Consumption (lb) | Cumulative Feed Consumption (lb) |
|-----------|---------------------|-----------------|-------------------------|----------------------------|-----------------------------|----------------------------------|
| 0         | 0.093               |                 |                         |                            |                             |                                  |
| 1         | 0.139               |                 |                         |                            |                             |                                  |
| 2         | 0.163               |                 |                         |                            |                             |                                  |
| 3         | 0.196               |                 |                         |                            |                             |                                  |
| 4         | 0.238               |                 |                         |                            |                             |                                  |
| 5         | 0.293               |                 |                         |                            |                             |                                  |
| 6         | 0.357               |                 |                         |                            |                             |                                  |
| <b>7</b>  | <b>0.421</b>        | <b>0.064</b>    | <b>0.060</b>            | <b>0.76</b>                |                             | <b>0.320</b>                     |
| 8         | 0.500               | 0.079           | 0.062                   | 0.80                       | 0.095                       | 0.399                            |
| 9         | 0.589               | 0.089           | 0.065                   | 0.84                       | 0.110                       | 0.494                            |
| 10        | 0.684               | 0.096           | 0.068                   | 0.88                       | 0.123                       | 0.604                            |
| 11        | 0.790               | 0.105           | 0.072                   | 0.92                       | 0.139                       | 0.728                            |
| 12        | 0.902               | 0.113           | 0.075                   | 0.96                       | 0.154                       | 0.867                            |
| 13        | 1.022               | 0.120           | 0.079                   | 1.00                       | 0.159                       | 1.021                            |
| <b>14</b> | <b>1.149</b>        | <b>0.127</b>    | <b>0.082</b>            | <b>1.03</b>                | <b>0.168</b>                | <b>1.180</b>                     |
| 15        | 1.283               | 0.133           | 0.086                   | 1.05                       | 0.183                       | 1.347                            |
| 16        | 1.422               | 0.139           | 0.089                   | 1.08                       | 0.196                       | 1.530                            |
| 17        | 1.566               | 0.145           | 0.092                   | 1.10                       | 0.216                       | 1.727                            |
| 18        | 1.716               | 0.150           | 0.095                   | 1.13                       | 0.236                       | 1.943                            |
| 19        | 1.871               | 0.155           | 0.098                   | 1.16                       | 0.247                       | 2.179                            |
| 20        | 2.031               | 0.159           | 0.102                   | 1.19                       | 0.254                       | 2.425                            |
| <b>21</b> | <b>2.194</b>        | <b>0.163</b>    | <b>0.104</b>            | <b>1.22</b>                | <b>0.265</b>                | <b>2.679</b>                     |
| 22        | 2.361               | 0.167           | 0.107                   | 1.25                       | 0.273                       | 2.944                            |
| 23        | 2.532               | 0.171           | 0.110                   | 1.27                       | 0.282                       | 3.217                            |
| 24        | 2.706               | 0.174           | 0.113                   | 1.29                       | 0.289                       | 3.499                            |
| 25        | 2.882               | 0.177           | 0.115                   | 1.31                       | 0.302                       | 3.788                            |
| 26        | 3.062               | 0.179           | 0.118                   | 1.34                       | 0.315                       | 4.090                            |
| 27        | 3.243               | 0.182           | 0.120                   | 1.36                       | 0.326                       | 4.405                            |
| <b>28</b> | <b>3.427</b>        | <b>0.184</b>    | <b>0.122</b>            | <b>1.38</b>                | <b>0.333</b>                | <b>4.731</b>                     |
| 29        | 3.612               | 0.185           | 0.125                   | 1.40                       | 0.340                       | 5.064                            |
| 30        | 3.799               | 0.187           | 0.127                   | 1.42                       | 0.344                       | 5.404                            |
| 31        | 3.987               | 0.188           | 0.129                   | 1.44                       | 0.351                       | 5.748                            |
| 32        | 4.176               | 0.189           | 0.131                   | 1.46                       | 0.357                       | 6.098                            |
| 33        | 4.366               | 0.190           | 0.132                   | 1.48                       | 0.362                       | 6.455                            |
| 34        | 4.556               | 0.190           | 0.134                   | 1.50                       | 0.366                       | 6.817                            |
| <b>35</b> | <b>4.747</b>        | <b>0.191</b>    | <b>0.136</b>            | <b>1.51</b>                | <b>0.373</b>                | <b>7.183</b>                     |
| 36        | 4.938               | 0.191           | 0.137                   | 1.53                       | 0.379                       | 7.555                            |
| 37        | 5.129               | 0.191           | 0.139                   | 1.55                       | 0.390                       | 7.935                            |
| 38        | 5.320               | 0.191           | 0.140                   | 1.56                       | 0.395                       | 8.325                            |
| 39        | 5.511               | 0.191           | 0.141                   | 1.58                       | 0.403                       | 8.719                            |
| 40        | 5.701               | 0.190           | 0.143                   | 1.60                       | 0.417                       | 9.123                            |
| 41        | 5.891               | 0.190           | 0.144                   | 1.62                       | 0.425                       | 9.539                            |
| <b>42</b> | <b>6.079</b>        | <b>0.188</b>    | <b>0.145</b>            | <b>1.64</b>                | <b>0.437</b>                | <b>9.965</b>                     |
| 43        | 6.267               | 0.188           | 0.146                   | 1.66                       | 0.445                       | 10.401                           |
| 44        | 6.453               | 0.186           | 0.147                   | 1.68                       | 0.459                       | 10.847                           |
| 45        | 6.637               | 0.184           | 0.147                   | 1.70                       | 0.467                       | 11.305                           |
| 46        | 6.821               | 0.184           | 0.148                   | 1.73                       | 0.474                       | 11.773                           |
| 47        | 7.005               | 0.184           | 0.149                   | 1.75                       | 0.485                       | 12.247                           |
| 48        | 7.188               | 0.183           | 0.150                   | 1.77                       | 0.496                       | 12.732                           |
| <b>49</b> | <b>7.368</b>        | <b>0.180</b>    | <b>0.150</b>            | <b>1.80</b>                | <b>0.498</b>                | <b>13.228</b>                    |
| 50        | 7.541               | 0.173           | 0.151                   | 1.82                       | 0.496                       | 13.726                           |
| 51        | 7.713               | 0.172           | 0.151                   | 1.84                       | 0.494                       | 14.222                           |
| 52        | 7.883               | 0.170           | 0.152                   | 1.87                       | 0.494                       | 14.716                           |
| 53        | 8.052               | 0.169           | 0.152                   | 1.89                       | 0.492                       | 15.210                           |
| 54        | 8.219               | 0.168           | 0.152                   | 1.91                       | 0.487                       | 15.701                           |
| 55        | 8.385               | 0.166           | 0.152                   | 1.93                       | 0.483                       | 16.189                           |
| <b>56</b> | <b>8.550</b>        | <b>0.165</b>    | <b>0.153</b>            | <b>1.95</b>                | <b>0.478</b>                | <b>16.671</b>                    |
| 57        | 8.712               | 0.161           | 0.153                   | 1.97                       | 0.476                       | 17.150                           |
| 58        | 8.872               | 0.160           | 0.153                   | 1.99                       | 0.472                       | 17.626                           |
| 59        | 9.026               | 0.155           | 0.153                   | 2.01                       | 0.470                       | 18.098                           |
| 60        | 9.180               | 0.153           | 0.153                   | 2.02                       | 0.465                       | 18.567                           |
| 61        | 9.332               | 0.152           | 0.153                   | 2.04                       | 0.461                       | 19.033                           |
| 62        | 9.484               | 0.152           | 0.153                   | 2.06                       | 0.456                       | 19.493                           |
| <b>63</b> | <b>9.634</b>        | <b>0.150</b>    | <b>0.153</b>            | <b>2.07</b>                | <b>0.450</b>                | <b>19.950</b>                    |



# Performance Objectives - Imperial

## MALES

| Age days  | Weight for Age (lb) | Daily Gain (lb) | Average Daily Gain (lb) | Cumulative Feed Conversion | Daily Feed Consumption (lb) | Cumulative Feed Consumption (lb) |
|-----------|---------------------|-----------------|-------------------------|----------------------------|-----------------------------|----------------------------------|
| 0         | 0.093               |                 |                         |                            |                             |                                  |
| 1         | 0.140               |                 |                         |                            |                             |                                  |
| 2         | 0.162               |                 |                         |                            |                             |                                  |
| 3         | 0.198               |                 |                         |                            |                             |                                  |
| 4         | 0.243               |                 |                         |                            |                             |                                  |
| 5         | 0.298               |                 |                         |                            |                             |                                  |
| 6         | 0.362               |                 |                         |                            |                             |                                  |
| <b>7</b>  | <b>0.428</b>        | <b>0.067</b>    | <b>0.061</b>            | <b>0.75</b>                |                             | <b>0.321</b>                     |
| 8         | 0.508               | 0.079           | 0.063                   | 0.79                       | 0.095                       | 0.403                            |
| 9         | 0.598               | 0.090           | 0.066                   | 0.83                       | 0.110                       | 0.498                            |
| 10        | 0.697               | 0.099           | 0.070                   | 0.87                       | 0.126                       | 0.608                            |
| 11        | 0.805               | 0.108           | 0.073                   | 0.91                       | 0.141                       | 0.733                            |
| 12        | 0.921               | 0.116           | 0.077                   | 0.95                       | 0.163                       | 0.875                            |
| 13        | 1.045               | 0.124           | 0.080                   | 0.99                       | 0.168                       | 1.038                            |
| <b>14</b> | <b>1.177</b>        | <b>0.132</b>    | <b>0.084</b>            | <b>1.02</b>                | <b>0.176</b>                | <b>1.205</b>                     |
| 15        | 1.316               | 0.139           | 0.088                   | 1.05                       | 0.192                       | 1.381                            |
| 16        | 1.463               | 0.147           | 0.091                   | 1.08                       | 0.206                       | 1.573                            |
| 17        | 1.617               | 0.154           | 0.095                   | 1.10                       | 0.237                       | 1.779                            |
| 18        | 1.777               | 0.160           | 0.099                   | 1.13                       | 0.248                       | 2.016                            |
| 19        | 1.944               | 0.167           | 0.102                   | 1.16                       | 0.256                       | 2.263                            |
| 20        | 2.117               | 0.173           | 0.106                   | 1.19                       | 0.265                       | 2.519                            |
| <b>21</b> | <b>2.296</b>        | <b>0.179</b>    | <b>0.109</b>            | <b>1.21</b>                | <b>0.276</b>                | <b>2.784</b>                     |
| 22        | 2.481               | 0.185           | 0.113                   | 1.23                       | 0.289                       | 3.060                            |
| 23        | 2.671               | 0.190           | 0.116                   | 1.25                       | 0.305                       | 3.349                            |
| 24        | 2.866               | 0.195           | 0.119                   | 1.27                       | 0.315                       | 3.653                            |
| 25        | 3.067               | 0.200           | 0.123                   | 1.29                       | 0.334                       | 3.968                            |
| 26        | 3.271               | 0.205           | 0.126                   | 1.32                       | 0.348                       | 4.302                            |
| 27        | 3.480               | 0.209           | 0.129                   | 1.34                       | 0.361                       | 4.650                            |
| <b>28</b> | <b>3.693</b>        | <b>0.213</b>    | <b>0.132</b>            | <b>1.36</b>                | <b>0.372</b>                | <b>5.010</b>                     |
| 29        | 3.910               | 0.217           | 0.135                   | 1.38                       | 0.382                       | 5.382                            |
| 30        | 4.131               | 0.220           | 0.138                   | 1.40                       | 0.391                       | 5.764                            |
| 31        | 4.354               | 0.223           | 0.140                   | 1.41                       | 0.400                       | 6.155                            |
| 32        | 4.580               | 0.226           | 0.143                   | 1.43                       | 0.408                       | 6.555                            |
| 33        | 4.809               | 0.229           | 0.146                   | 1.45                       | 0.417                       | 6.963                            |
| 34        | 5.041               | 0.231           | 0.148                   | 1.46                       | 0.424                       | 7.381                            |
| <b>35</b> | <b>5.274</b>        | <b>0.233</b>    | <b>0.151</b>            | <b>1.48</b>                | <b>0.430</b>                | <b>7.804</b>                     |
| 36        | 5.509               | 0.235           | 0.153                   | 1.49                       | 0.441                       | 8.234                            |
| 37        | 5.745               | 0.236           | 0.155                   | 1.51                       | 0.450                       | 8.675                            |
| 38        | 5.983               | 0.237           | 0.157                   | 1.53                       | 0.458                       | 9.125                            |
| 39        | 6.221               | 0.238           | 0.160                   | 1.54                       | 0.467                       | 9.583                            |
| 40        | 6.460               | 0.239           | 0.161                   | 1.56                       | 0.480                       | 10.050                           |
| 41        | 6.699               | 0.239           | 0.163                   | 1.57                       | 0.491                       | 10.530                           |
| <b>42</b> | <b>6.937</b>        | <b>0.239</b>    | <b>0.165</b>            | <b>1.59</b>                | <b>0.504</b>                | <b>11.021</b>                    |
| 43        | 7.176               | 0.238           | 0.167                   | 1.61                       | 0.515                       | 11.525                           |
| 44        | 7.413               | 0.238           | 0.168                   | 1.62                       | 0.528                       | 12.040                           |
| 45        | 7.650               | 0.237           | 0.170                   | 1.64                       | 0.537                       | 12.568                           |
| 46        | 7.885               | 0.235           | 0.171                   | 1.66                       | 0.545                       | 13.104                           |
| 47        | 8.118               | 0.233           | 0.173                   | 1.68                       | 0.554                       | 13.649                           |
| 48        | 8.350               | 0.231           | 0.174                   | 1.70                       | 0.565                       | 14.203                           |
| <b>49</b> | <b>8.579</b>        | <b>0.229</b>    | <b>0.175</b>            | <b>1.72</b>                | <b>0.571</b>                | <b>14.768</b>                    |
| 50        | 8.805               | 0.226           | 0.176                   | 1.74                       | 0.578                       | 15.339                           |
| 51        | 9.028               | 0.223           | 0.177                   | 1.76                       | 0.584                       | 15.917                           |
| 52        | 9.248               | 0.220           | 0.178                   | 1.78                       | 0.593                       | 16.501                           |
| 53        | 9.464               | 0.216           | 0.179                   | 1.81                       | 0.595                       | 17.094                           |
| 54        | 9.677               | 0.212           | 0.179                   | 1.83                       | 0.597                       | 17.690                           |
| 55        | 9.884               | 0.208           | 0.180                   | 1.85                       | 0.595                       | 18.287                           |
| <b>56</b> | <b>10.088</b>       | <b>0.203</b>    | <b>0.180</b>            | <b>1.87</b>                | <b>0.591</b>                | <b>18.882</b>                    |
| 57        | 10.286              | 0.198           | 0.180                   | 1.89                       | 0.586                       | 19.473                           |
| 58        | 10.478              | 0.193           | 0.181                   | 1.91                       | 0.582                       | 20.060                           |
| 59        | 10.665              | 0.187           | 0.181                   | 1.94                       | 0.573                       | 20.642                           |
| 60        | 10.846              | 0.181           | 0.181                   | 1.96                       | 0.567                       | 21.215                           |
| 61        | 11.021              | 0.174           | 0.181                   | 1.98                       | 0.560                       | 21.781                           |
| 62        | 11.188              | 0.168           | 0.180                   | 2.00                       | 0.549                       | 22.341                           |
| <b>63</b> | <b>11.349</b>       | <b>0.161</b>    | <b>0.180</b>            | <b>2.02</b>                | <b>0.540</b>                | <b>22.890</b>                    |

# Broiler Nutrition

## Nutrient Recommendations

|  |         | Starter                  | Grower                      | Finisher 1               | Finisher 2*    |
|--|---------|--------------------------|-----------------------------|--------------------------|----------------|
| <b>FEEDING AMOUNT/bird</b>                         |         | <b>180 g<br/>0.40 lb</b> | <b>700 g<br/>1.54 lb</b>    | <b>1350 g<br/>3.0 lb</b> |                |
| <b>FEEDING PERIOD days</b>                         |         | <b>0 - 8</b>             | <b>9 - 18</b>               | <b>19 - 28</b>           | <b>&gt; 29</b> |
| <b>FEED STRUCTURE</b>                              |         | <b>Crumble</b>           | <b>Crumble /<br/>Pellet</b> | <b>Pellet</b>            | <b>Pellet</b>  |
| <b>Crude Protein</b>                               | %       | 21-22                    | 19-20                       | 18-19                    | 17-18          |
| <b>Metabolizable energy<br/>(AMEn<sup>†</sup>)</b> | MJ/kg   | 12.45                    | 12.66                       | 12.97                    | 13.18          |
|  | Kcal/kg | 2,975                    | 3,025                       | 3,100                    | 3,150          |
|  | Kcal/lb | 1,349                    | 1,372                       | 1,406                    | 1,429          |
| <b>Digestible Lysine</b>                           | %       | 1.22                     | 1.12                        | 1.02                     | 0.97           |
| <b>Digestible Methionine</b>                       | %       | 0.46                     | 0.45                        | 0.42                     | 0.40           |
| <b>Digestible Met + Cys</b>                        | %       | 0.91                     | 0.85                        | 0.80                     | 0.76           |
| <b>Digestible Tryptophan</b>                       | %       | 0.20                     | 0.18                        | 0.18                     | 0.17           |
| <b>Digestible Threonine</b>                        | %       | 0.83                     | 0.73                        | 0.66                     | 0.63           |
| <b>Digestible Arginine</b>                         | %       | 1.28                     | 1.18                        | 1.07                     | 1.02           |
| <b>Digestible Valine</b>                           | %       | 0.89                     | 0.85                        | 0.76                     | 0.73           |
| <b>Digestible Isoleucine</b>                       | %       | 0.77                     | 0.72                        | 0.67                     | 0.64           |
| <b>Calcium</b>                                     | %       | 0.90                     | 0.84                        | 0.76                     | 0.76           |
| <b>Available Phosphorus</b>                        | %       | 0.45                     | 0.42                        | 0.38                     | 0.38           |
| <b>Sodium</b>                                      | %       | 0.16-0.23                | 0.16-0.23                   | 0.16-0.23                | 0.16-0.23      |
| <b>Chloride</b>                                    | %       | 0.16-0.30                | 0.16-0.30                   | 0.16-0.30                | 0.16-0.30      |
| <b>Potassium</b>                                   | %       | 0.60-0.95                | 0.60-0.95                   | 0.60-0.95                | 0.60-0.95      |
| <b>Linoleic Acid</b>                               | %       | 1.00                     | 1.00                        | 1.00                     | 1.00           |

<sup>†</sup> Energy system is based on the Apparent Metabolizable Energy corrected by Nitrogen (AMEn).

\* Should withdrawal feed be required, use same finisher specification.

# Broiler Nutrition

## Balanced digestible amino acid ratios

| Amino Acid           | Starter % | Grower % | Finisher 1 % | Finisher 2* % |
|----------------------|-----------|----------|--------------|---------------|
| Lysine <sup>†</sup>  | 100       | 100      | 100          | 100           |
| Methionine           | 38        | 40       | 41           | 41            |
| Methionine + Cystine | 75        | 76       | 78           | 78            |
| Tryptophan           | 16        | 16       | 18           | 18            |
| Threonine            | 68        | 65       | 65           | 65            |
| Arginine             | 105       | 105      | 105          | 105           |
| Valine               | 73        | 75       | 75           | 75            |
| Isoleucine           | 63        | 64       | 65           | 66            |

<sup>†</sup>In the profile Lysine is always the reference amino acid, and is shown at 100%.

\* Should withdrawal feed be required, use same finisher specification.

## Supplementary levels of vitamins and trace elements (per tonne)

|                         |       | Starter | Grower | Finisher 1 & 2 |
|-------------------------|-------|---------|--------|----------------|
| Vitamin A               | (MIU) | 10-13   | 10     | 10             |
| Vitamin D3              | (MIU) | 5       | 5      | 5              |
| Vitamin E               | (KIU) | 80      | 50     | 50             |
| Vitamin K               | (g)   | 3       | 3      | 3              |
| Vitamin B1 (thiamine)   | (g)   | 3       | 2      | 2              |
| Vitamin B2 (riboflavin) | (g)   | 9       | 8      | 6              |
| Vitamin B6 (pyridoxine) | (g)   | 4       | 3      | 3              |
| Vitamin B12             | (mg)  | 20      | 15     | 15             |
| Biotin (Maize Diets)    | (mg)  | 150     | 120    | 120            |
| Biotin (Wheat Diets)    | (mg)  | 200     | 180    | 180            |
| Choline*                | (g)   | 500     | 400    | 350            |
| Folic Acid              | (g)   | 2       | 2      | 1.5            |
| Nicotinic Acid          | (g)   | 60      | 50     | 50             |
| Pantothenic Acid        | (g)   | 15      | 12     | 10             |
| Manganese               | (g)   | 100     | 100    | 100            |
| Zinc                    | (g)   | 100     | 100    | 100            |
| Iron                    | (g)   | 40      | 40     | 40             |
| Copper                  | (g)   | 15      | 15     | 15             |
| Iodine                  | (g)   | 1       | 1      | 1              |
| Selenium                | (g)   | 0.35    | 0.35   | 0.35           |

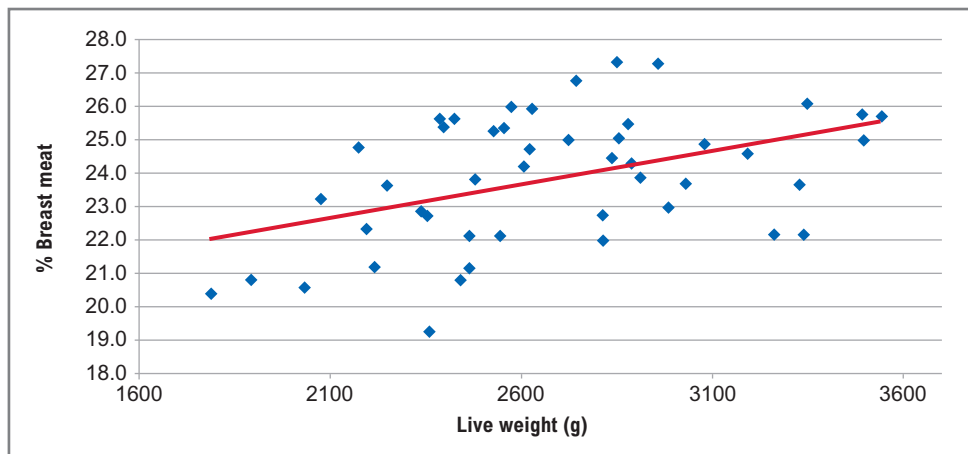
\* Preferably Choline is added directly into the mixer rather than via a premix because of its hygroscopic nature. Vitamin and trace mineral levels may vary depending on the source and supplier. The numbers above refers to e.g. usage of inorganic minerals and a vitamin D3 source. MIU = million international units  
KIU = thousand international units  
g = grams  
mg = milligrams  
Supplementary levels of trace elements should always be reviewed to ensure total levels do not exceed those set in local legislation (e.g. EU 1334/2003).

# Yield Performance

Meat yield is dependent on many factors, but those that have the most influence are weight, age and nutrition.

## Weight

- Carcass and breast meat yield increase as a function of live weight at any given age.



The graph above is a representative sample of percent breast meat yield (hot yields) for birds from a single flock of as-hatched broilers processed at 48 days.

## Feed, Yield, and Economics

- Cobb data has shown that protein and amino acids can be elevated by approximately 8 percent for the purpose of increasing breast meat yield, although higher feed cost per unit of live weight may be a secondary result.
- For the most economical feed per unit of live weight, lower amino acids may be more applicable, although slower growth rate and higher FCR may be a secondary result.
- The exact overall levels of amino acids should be determined by ingredient prices and finished product values (from the processing plant).
- The Cobb500 is a **flexible** broiler that can bring good costs from low amino acid density feeds, or will respond with accelerated growth and breast yield using high amino acid levels.
- Cobb Technical Service will gladly assist customers to match specific economic priorities with formulation; however, the recommendations in this supplement represent very sound overall baseline levels.



# Yield Performance

## Predicted hot yields at given weights (% of live weight)

### AS HATCHED

| Weight |      | % Eviscerated | % Breast Meat | % Whole Leg | % Wing |
|--------|------|---------------|---------------|-------------|--------|
| g      | lb   |               |               |             |        |
| 1588   | 3.50 | 71.06         | 22.70         | 22.34       | 7.57   |
| 1701   | 3.75 | 71.45         | 22.97         | 22.45       | 7.57   |
| 1928   | 4.25 | 72.19         | 23.50         | 22.68       | 7.57   |
| 2155   | 4.75 | 72.90         | 24.00         | 22.88       | 7.57   |
| 2381   | 5.25 | 73.56         | 24.49         | 23.07       | 7.57   |
| 2608   | 5.75 | 74.18         | 24.95         | 23.24       | 7.57   |
| 2835   | 6.25 | 74.76         | 25.40         | 23.39       | 7.58   |
| 3062   | 6.75 | 75.30         | 25.82         | 23.52       | 7.58   |
| 3289   | 7.25 | 75.79         | 26.23         | 23.63       | 7.58   |
| 3515   | 7.75 | 76.25         | 26.61         | 23.73       | 7.58   |
| 3742   | 8.25 | 76.66         | 26.97         | 23.81       | 7.59   |
| 3969   | 8.75 | 77.03         | 27.32         | 23.87       | 7.59   |
| 4196   | 9.25 | 77.35         | 27.64         | 23.91       | 7.60   |

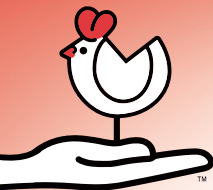
### FEMALES

| Weight |      | % Eviscerated | % Breast Meat | % Whole Leg | % Wing |
|--------|------|---------------|---------------|-------------|--------|
| g      | lb   |               |               |             |        |
| 1588   | 3.50 | 71.38         | 23.14         | 22.18       | 7.59   |
| 1701   | 3.75 | 71.81         | 23.46         | 22.28       | 7.59   |
| 1928   | 4.25 | 72.61         | 24.06         | 22.45       | 7.58   |
| 2155   | 4.75 | 73.36         | 24.64         | 22.60       | 7.57   |
| 2381   | 5.25 | 74.04         | 25.19         | 22.72       | 7.56   |
| 2608   | 5.75 | 74.65         | 25.72         | 22.82       | 7.54   |
| 2835   | 6.25 | 75.20         | 26.22         | 22.90       | 7.52   |
| 3062   | 6.75 | 75.69         | 26.68         | 22.95       | 7.50   |

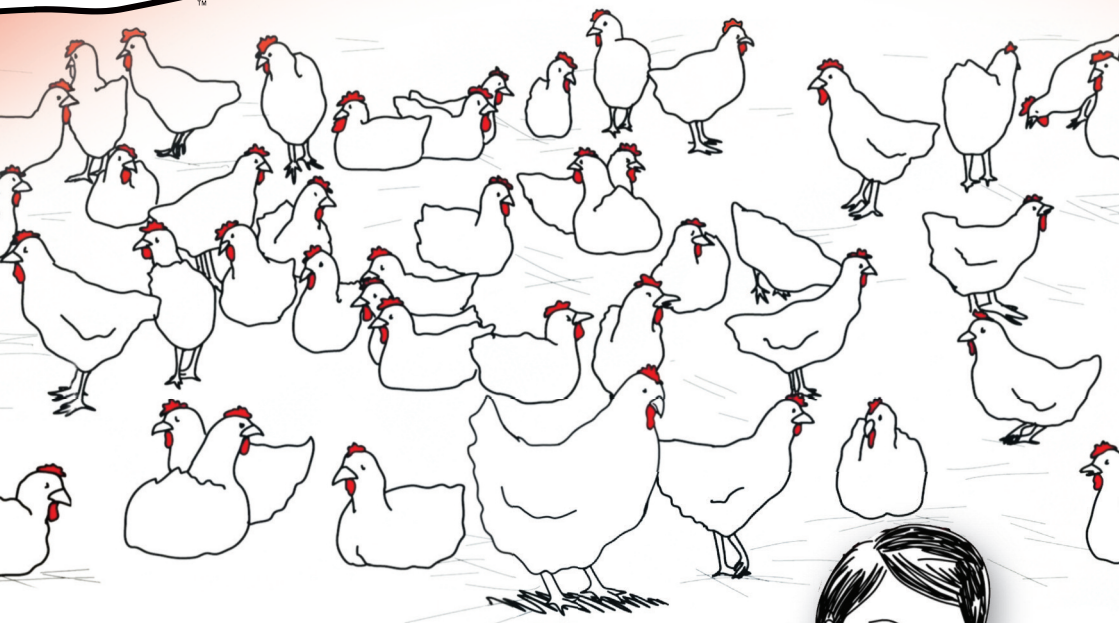
### MALES

| Weight |      | % Eviscerated | % Breast Meat | % Whole Leg | % Wing |
|--------|------|---------------|---------------|-------------|--------|
| g      | lb   |               |               |             |        |
| 1588   | 3.50 | 70.52         | 22.28         | 22.32       | 7.51   |
| 1701   | 3.75 | 70.92         | 22.49         | 22.49       | 7.52   |
| 1928   | 4.25 | 71.69         | 22.92         | 22.80       | 7.55   |
| 2155   | 4.75 | 72.43         | 23.34         | 23.10       | 7.57   |
| 2381   | 5.25 | 73.12         | 23.74         | 23.38       | 7.60   |
| 2608   | 5.75 | 73.78         | 24.14         | 23.63       | 7.62   |
| 2835   | 6.25 | 74.40         | 24.52         | 23.86       | 7.65   |
| 3062   | 6.75 | 74.99         | 24.89         | 24.07       | 7.68   |
| 3289   | 7.25 | 75.53         | 25.25         | 24.26       | 7.71   |
| 3515   | 7.75 | 76.04         | 25.60         | 24.43       | 7.74   |
| 3742   | 8.25 | 76.52         | 25.94         | 24.57       | 7.77   |
| 3969   | 8.75 | 76.95         | 26.27         | 24.70       | 7.81   |
| 4196   | 9.25 | 77.35         | 26.58         | 24.80       | 7.84   |
| 4423   | 9.75 | 77.72         | 26.89         | 24.88       | 7.88   |

Eviscerated carcass is calculated with feet and shanks removed from the hock joint.



# cobbcare.com



## Bird Health and Well-Being

Cobb has a long-standing commitment to the health and well-being of the chickens that we breed, raise and distribute worldwide.



COBB-VANTRESS.COM  
COBBCARES.COM



ONE FAMILY.  
ONE PURPOSE.